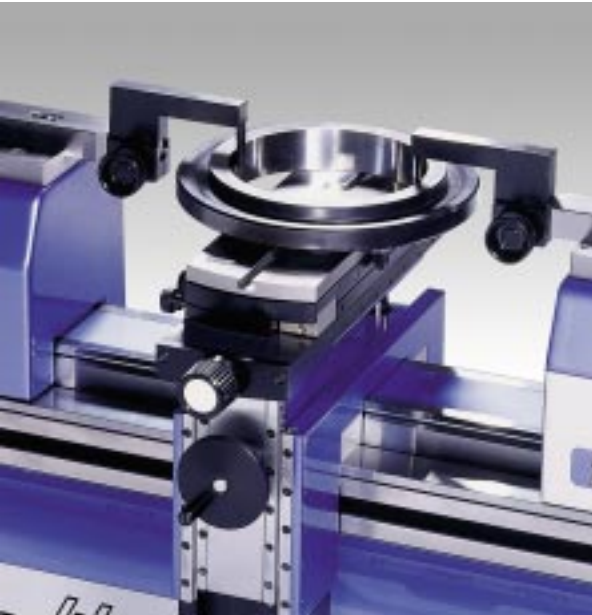


▲ Setting of 2-point bore gages using 54-196-107 and 54-196-021



▲ Setting of 2-point bore gages using 54-190-805, 54-190-829 and 54-196-040

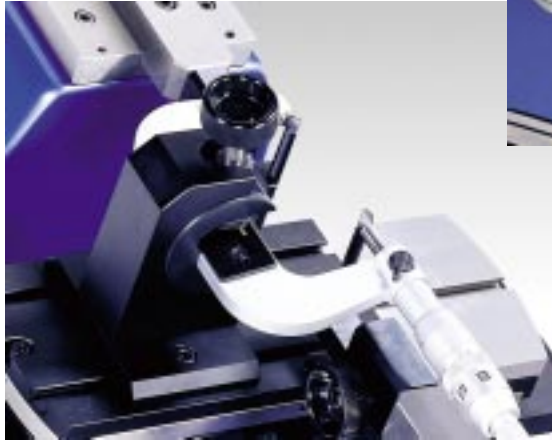


▲ Checking of ring gages from .473 to 10" (12 to 250mm) using #54-196-160, 54-197-162 and 54-197-142



▶ Checking of snap gages from .473 to 6" (12 to 150mm) using #54-196-160, 54-190-815 and 54-197-162





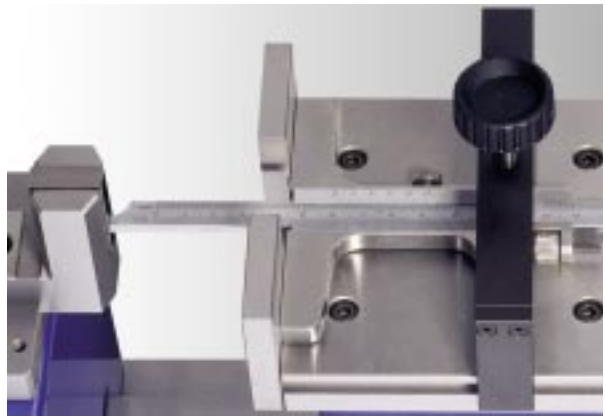
▲ Checking and setting of external micrometers from .4725 to 4" (12 to 100mm) using 54-197-114, 54-196-160 & 54-197-162



▲ Checking and setting of external micrometers from 3" to 120" (75 to 3050mm) using 54-190-805 & 54-190-825



▲ Checking of 8mm dial indicators above range of 50mm using holder 54-190-824  
Checking of 3/8" dial indicators up to 2" range using 54-190-823



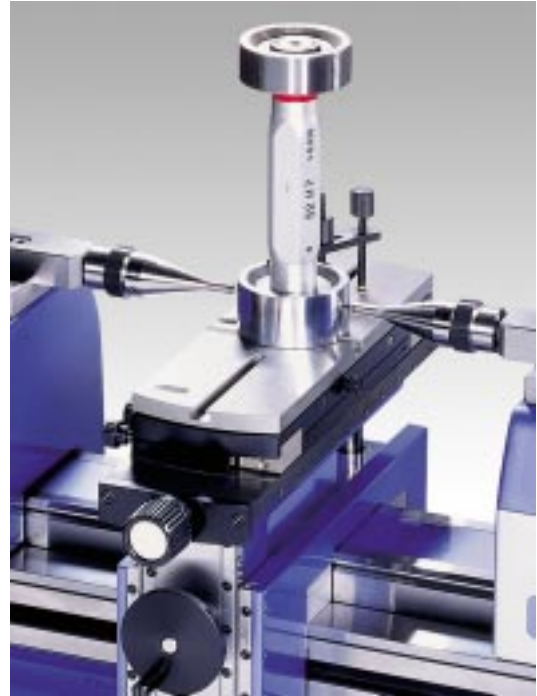
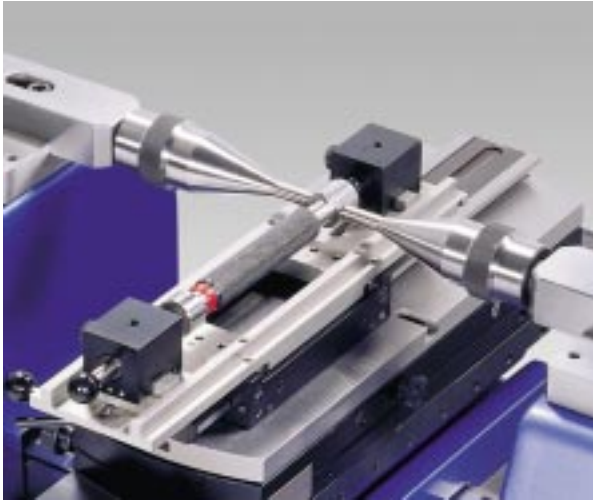
▲ Checking of depth calipers using 54-190-805 & 54-190-827



▲ Checking of calipers using 54-196-006



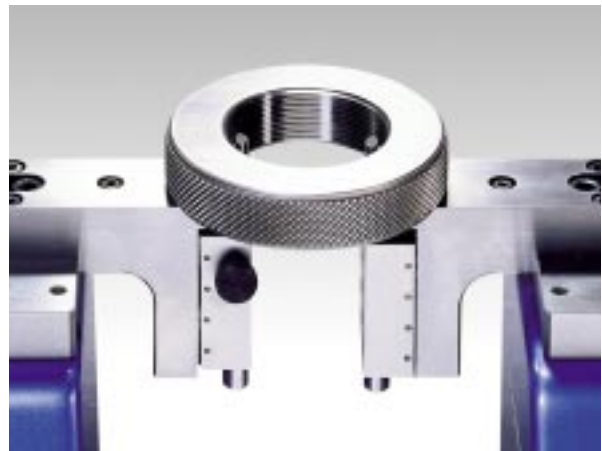
▼ *Setting of plug gages between centers up to maximum diameter of 1.18"(30mm), maximum length 6"(150mm) using 54-196-160, 54-190-806 and 54-197-106*



▼ *Checking of threaded ring gages from pitch 48 to 4 threads per inch/0.7 to 6mm (maximum internal diameter of 7.08"/180mm) using 54-196-160, 54-197-142, 54-197-075 and 54-197-074 or 54-197-070 & 073*

▲ *Setting of plug gages from diameter of 1.18" to 10"(30 to 250mm) using 54-196-160, 54-197-142 and 54-190-806*

*Checking of ring gages from diameter of .04 to 4"(1 to 100mm) using 54-196-160, 54-197-142, 54-197-070 and 54-190-076 and 54-197-074 or 54-197-070 & 073*



▲ *Checking of threaded ring gages (low cost method) from minimum internal diameter of .70"(18mm), pitch from 0.25 to 5mm (4-80) thread per inch using 54-190-818, 54-190-804 and 54-190-826*

