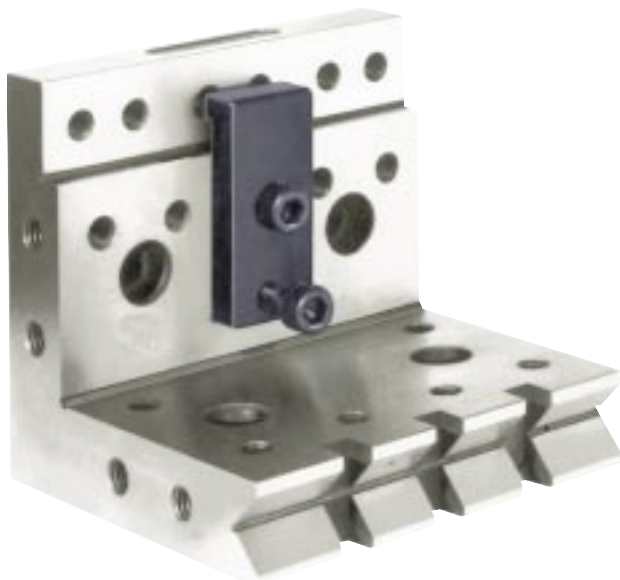


## Versatile Angle Plate



▲ #57-470-445 w/face clamp.

This Angle Plate with a step on one inside face and a vee on one end is ideal for both inspection and precision die making. The vee has three slots milled at right angles to it. The vee shape will accept cylindrical bodies such as diamonds for dressing grinding wheels on surface grinders. A square bodied part can be inserted on the angle's slot. By using the optional side clamp, the machining of two faces is completely accessible without moving or relocating the part.

Twenty-five  $\frac{5}{16}$ "-18 tapped holes allow three optional clamping accessories to be bolted on in various configurations. Four  $\frac{3}{8}$ " counterbore holes allow this angle plate to be bolted to a machine or machining accessories.



▲ #57-470-445 w/yoke & side clamp.

### Special Features:

- Accessories available: Flat offset steel clamp, adjustable yoke (holds cylindrical bodies) and adjustable side clamp (holds small components for end grinding.)
- Steel hardened to RC58-62.
- Sides are precision ground flat, parallel and square.
- Accuracy within .0002".



Number	Description
57-470-445	Angle Plate: 4" x 4" x 4 1/2"
<b>Accessories:</b>	
57-470-446	Adjustable yoke. Range: 1/4"—7/8" diameter.
57-470-447	Flat offset clamp (steel): 1" wide.
57-470-448	Adjustable side clamp. Range: 1/2" to 1 1/2" wide.