

Sciencescope International Corporation

"Your Visual Inspection Specialists"



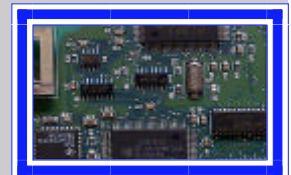
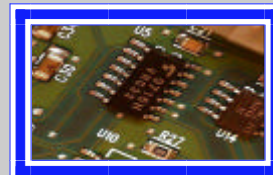
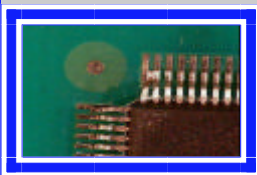
CC-97-VS2-MAC ~ Macro Zoom Video Inspection System

System includes:

- CC-97-LN1**
Macro Zoom Lens
- SB-FX-01**
Articulating Arm
- SB-CCD-FMT**
Rack and Pinion Focus Assembly
- CC-97-CD**
1/3" Color CCD Camera (480 Lines)
- CC-88-TV**
14" Color Monitor
- IL-88-TL**
Fluorescent ring light

Sciencescope's Macro Video Inspection System is specifically designed for Large Field of View applications. With included "Close-Up" lens, working distance range is from 5.5" to 11" and up to 60x magnification @ 5.5" of WD. Remove the "close-Up" lens and you instantly have an inspection system with a working distance range from 11" to infinity. Macro Zoom lens has a manual zoom, focus and iris control. 1/3" CCD Color Camera with S-Video Cable (480 TV Lines) and a 14" Color CCTV Monitor provide you with clear and distortion free images. Articulating Arm clamps onto most work tables (2" max), ideal for inspection of large samples or to maximize space on work bench. Focus mount attaches directly to CCD Camera via 1/4"-20 mounting screws and mounts directly onto the end of the Boom Stand via a 5/8" mounting dowel (industry standard). Fluorescent ring light provides 360 degree "shadow-free" illumination.

Sample Images



Lens Specifications

| With "close-up" lens | | |
|----------------------|--------------------|---------------------|
| Working Distance | FOV (mm) @ Low Mag | FOV (mm) @ High Mag |
| 5.5" | 20 x 27 | 3.2 x 4.3 |
| 7" | 32 x 43 | 5.4 x 7.6 |
| 8" | 39 x 52 | 6.5 x 8.6 |
| 9" | 45 x 60 | 7.6 x 10.3 |
| 10" | 49 x 65 | 8.6 x 11.9 |
| 11" | 54 x 72 | 9.2 x 12.4 |

| With out "close-up" lens | | |
|--------------------------|--------------------|---------------------|
| Working Distance | FOV (mm) @ Low Mag | FOV (mm) @ High Mag |
| 11" | 42.6 x 56.7 | 7.6 x 10.3 |
| 24" | 107 x 143 | 18 x 23.8 |
| 36" | 168 x 224 | 29.7 x 39.4 |
| 48" | 224 x 298 | 37.8 x 50.2 |