

# Sciencescope International Corporation

*"Your Visual Inspection Specialists"*



**Video Capture Card Included**  
Click for Specs

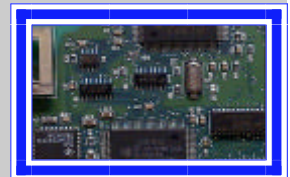
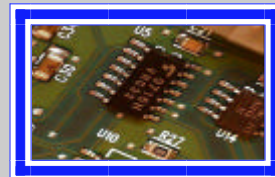
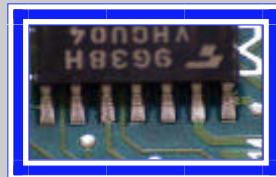
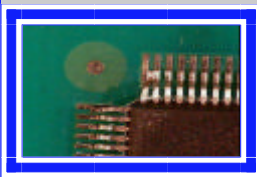
**System includes:**

- CC-97-LN1**  
Macro Zoom Lens
- SB-BB-S0 & SB-MB2-S008**  
Big Base Boom Stand w/ vertical extension
- SB-CCD-FMT**  
Rack and Pinion Focus Assembly
- CC-97-CD**  
1/3" Color CCD Camera (480 Lines)
- CC-97-FG**  
Video Capture Card
- IL-88-FOI**  
150 Watt Fiber Optic Illuminator
- IL-97-DPL**  
Dual Pipe Light Guides

## CC-97-VSF-MAC ~ Macro Zoom Video Documentation System

Sciencescope's Macro Video Documentation System is specifically designed for Large Field of View applications. With included "Close-Up" lens, working distance range is from 5.5" to 11" and up to 60x magnification @ 5.5" of WD. Remove the "close-Up" lens and you instantly have an inspection system with a working distance range from 11" to infinity. Macro Zoom lens has a manual zoom, focus and iris control. 1/3" CCD Color Camera with S-Video Cable (480 TV Lines) and a Video Capture Card provide you with clear and distortion free images; which can be captured and digitized to be emailed at a later date or inserted onto a report. Large Base Boom Stand (15" x 15") is ideal as a work platform or in order to mount the Sciencescope XY Gliding Table onto it. Focus mount attaches directly to CCD Camera via 1/4"-20 mounting screws and mounts directly onto the end of the Boom Stand via a 5/8" mounting dowel (industry standard). 150 Watt Fiber Optic illuminator with Dual Pipe Light guides for spot illumination.

### Sample Images



### Lens Specifications

With "close-up" lens			With out "close-up" lens		
Working Distance	FOV (mm) @ Low Mag	FOV (mm) @ High Mag	Working Distance	FOV (mm) @ Low Mag	FOV (mm) @ High Mag
5.5"	20 x 27	3.2 x 4.3	11"	42.6 x 56.7	7.6 x 10.3
7"	32 x 43	5.4 x 7.6	24"	107 x 143	18 x 23.8
8"	39 x 52	6.5 x 8.6	36"	168 x 224	29.7 x 39.4
9"	45 x 60	7.6 x 10.3	48"	224 x 298	37.8 x 50.2
10"	49 x 65	8.6 x 11.9			
11"	54 x 72	9.2 x 12.4			