

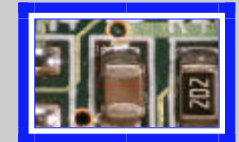
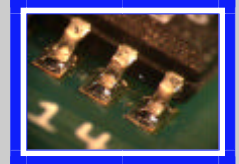
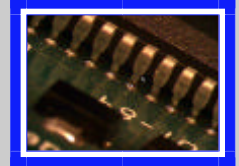
Scienscope International Corporation

"Your Visual Inspection Specialists"



System Includes:
MZ-98-70 & MZ-CP-03
 Macro Zoom Lens and 0.35x Coupler
CC-88-BM
 Big Base Boom Stand with 25 mm posts
SB-AB-MZ
 E-Arm for Micro Zoom Lens
CC-97-CD
 1/3" Color CCD Camera (480 Lines)
CC-97-FG
 Video Capture Card
IL-88-FOI
 150 Watt Fiber Optic Illuminator
IL-MZ-AN
 Annular Ring Light Guide for Micro Zoom

Sample Images



CC-97-VSF ~ Micro Zoom Video Documentation System

Scienscope's Micro Video Documentation System is specifically designed for High Magnification, High Resolution applications. Modular design allows you to interchange couplers and auxiliary lenses to change magnification, field of views and working distance - see table below. CC-97-VS2 comes standard with Micro Zoom Lens and 0.35x Coupler; providing you with 13x to 81x magnification on a 14" monitor. 1/3" CCD Color Camera with S-Video Cable (480 TV Lines) and a Video Capture Card provide you with clear and distortion free images; which can be saved and stored as JPEG, BMP, TIFF and many more types files. Large Base Boom Stand (15" x 15") is ideal as a work platform or in order to mount the Scienscope XY Gliding Table onto it. E-Arm mounts directly onto the end of the Boom Stand via a 5/8" mounting dowel (industry standard). 150 Watt Fiber Optic illuminator with Annular Ring Light Guide for "Shadow-Free" Illumination.

Micro Zoom Lens Accessories

Couplers

MZ-CP-03 ~ 0.35x CCD Coupler
MZ-CP-05 ~ 0.5x CCD Coupler
MZ-CP-07 ~ 0.75x CCD Coupler
MZ-CP-10 ~ 1x CCD Coupler
MZ-CP-15 ~ 1.5x CCD Coupler
MZ-CP-20 ~ 2x CCD Coupler

Auxiliary Lenses

MZ-03-70 ~ 0.3x Auxiliary Lens
MZ-05-70 ~ 0.5x Auxiliary Lens
MZ-20-70 ~ 2x Auxiliary Lens

*using a 14" monitor

| Lens | Coupler | | | | | | | | | | | | Working Distance mm/in. |
|------|----------|--------|----------|----------|------------|------------|----------|--------|-------------|------------|--------------|------------|-------------------------|
| | .3x | | .5x | | .75X | | 1x | | 1.5X | | 2X | | |
| | Mag. | FOV mm | Mag. | FOV mm | Mag. | FOV mm | Mag. | FOV mm | Mag. | FOV mm | Mag. | FOV mm | |
| 0.3x | 4x-24x | 95-15 | 6x-40x | 57-9 | 10x - 61x | 38 - 5.9 | 13x-81x | 28-4 | 19x - 122x | 19 - 3 | 25x - 162x | 14 - 2.22 | 314 / 12.3" |
| 0.5x | 6x-40x | 57-9 | 11x-68x | 34-5 | 16x - 101x | 22.9 - 3.5 | 21x-135x | 17-3 | 32x - 203x | 11.4 - 1.8 | 42x - 270x | 8.6 - 1.33 | 189 / 7.4" |
| 1x | 13x-81x | 28-4 | 21x-135x | 17-2.7 | 32x - 203x | 11.4 - 1.8 | 42x-270x | 9-1 | 63x - 405x | 5.7 - .9 | 84x - 540x | 4.3 - .66 | 108 / 4.25" |
| 2x | 26x-162x | 14-2 | 42x-270x | 8.6-1.33 | 63x - 405x | 5.7 - .9 | 84x-540x | 4-.66 | 126x - 810x | 2.85 - .44 | 168x - 1080x | 2.15 - .33 | 32 / 1.25" |

5751 Schaefer Ave, Chino CA 91710
 (909) 590-7273 tel ~ (800) 216-1800 toll free ~ (909) 590-7020 fax
www.scienscope.com